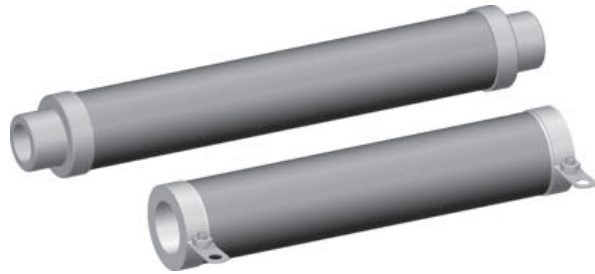


Metal Oxide Resistors, Special Purpose High Power, Ultra High Value



FEATURES

- Wattages to 400 watt at + 25°C
- Derated to 0 at + 230°C
- Voltage testing to 100KV
- Tolerances: ± 1%, ± 2%, ± 5%, ± 10%
- Two terminal styles, Style 3 - Tab Terminal and Style 4 - Ferrule Terminal
- ± 200ppm/°C and ± 100ppm/°C available, measured between + 25°C and + 125°C
- Coating: Blue flameproof

STANDARD ELECTRICAL SPECIFICATIONS

MODEL	POWER RATING P _{25°C} W	VOLTAGE RATING	RESISTANCE Ω	
			Min.	Max.
RJU-40	40	25KV	1K	1G
RJU-50	50	33KV	1K	1G
RJU-70	70	40KV	1K	1G
RJU-95 RJU-95-1	95	35KV	1K	1G
RJU-140 RJU-140-1	140	65KV	1K	1G
RJU-275 RJU-275-1	275	90KV	100K	1G
RJU-150 RJU-150-1	150	40KV	100K	1G
RJU-400 RJU-400-1	400	125KV	100K	1G

Note: All resistance values are calibrated at 100 VDC. Calibration at other voltages upon request.

MARKING

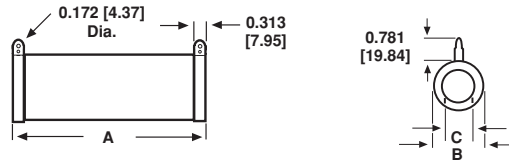
- DALE
- Model
- Value
- Tolerance
- Date code

ORDERING INFORMATION

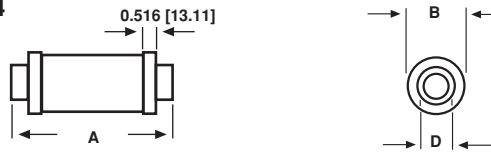
RJU-xx MODEL	2M50 VALUE	K TOLERANCE	K TEMPERATURE COEFFICIENT
		K = ± 10% G = ± 2% J = ± 5% F = ± 1%	M = ± 200ppm/°C K = ± 100ppm/°C

DIMENSIONS in inches [millimeters]

Style 3

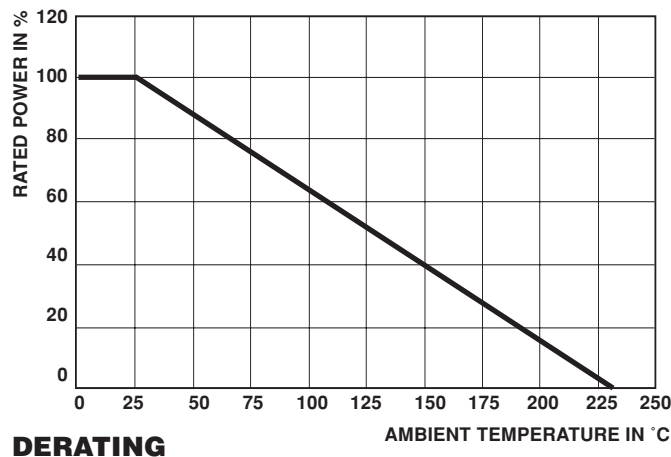


Style 4



MODEL	STYLE	A	B*	C	D
RJU-40	3	4.50 [114.30]	0.750 [19.05]	0.500 [12.70]	N/A
RJU-50	3	6.0 [152.40]	0.750 [19.05]	0.500 [12.70]	N/A
RJU-70	3	8.0 [203.20]	0.750 [19.05]	0.500 [12.70]	N/A
RJU-95	3	6.50 [165.10]	1.13 [28.70]	0.750 [19.05]	N/A
RJU-95-1	4	7.69 [195.33]	1.13 [28.70]	N/A	0.812 [20.62]
RJU-140	3	10.50 [266.70]	1.13 [28.70]	0.750 [19.05]	N/A
RJU-140-1	4	11.69 [296.93]	1.13 [28.70]	N/A	0.812 [20.62]
RJU-275	3	14.50 [368.30]	1.50 [38.10]	1.13 [28.70]	N/A
RJU-275-1	4	15.69 [398.53]	1.50 [38.10]	N/A	1.14 [28.96]
RJU-150	3	6.50 [165.10]	2.0 [50.80]	1.56 [39.62]	N/A
RJU-150-1	4	7.69 [195.33]	2.0 [50.80]	N/A	1.14 [28.96]
RJU-400	3	18.50 [469.90]	2.0 [50.80]	1.56 [39.62]	N/A
RJU-400-1	4	19.69 [500.13]	2.0 [50.80]	N/A	1.14 [28.96]

* Dimensional tolerances are $\pm .016$ [.406mm] or $\pm 1\%$, whichever is greater.



DERATING